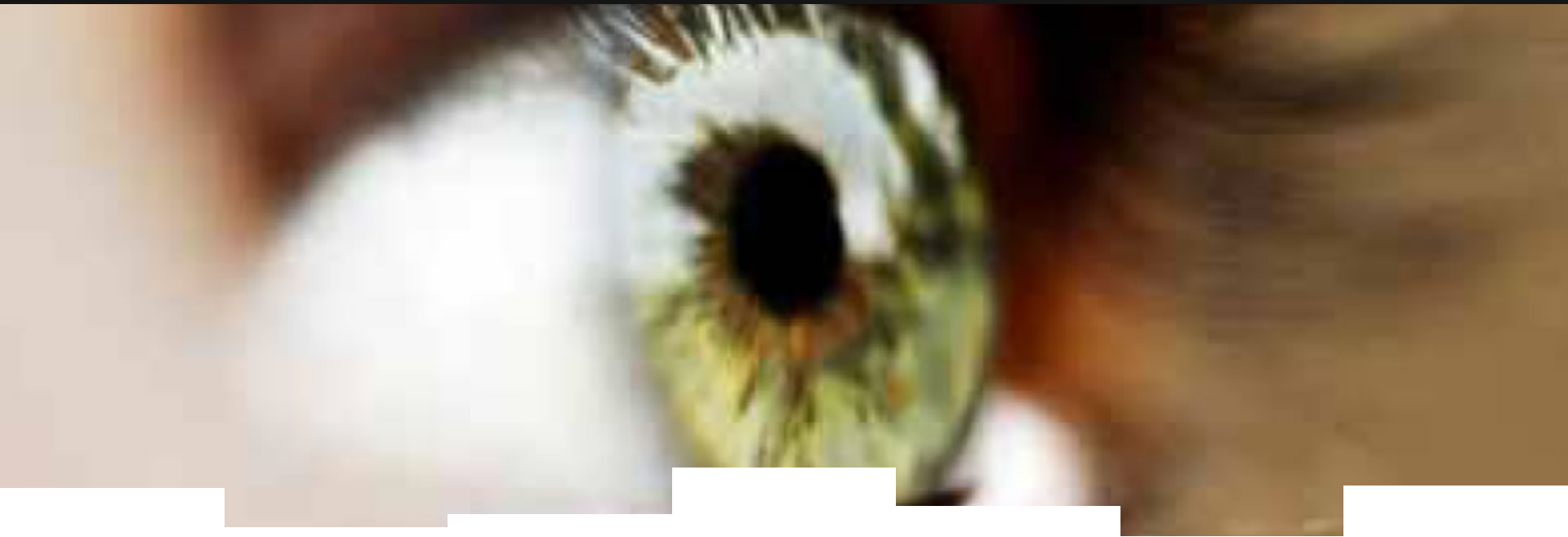


The DSL/Ethernet Gateway and IPv6



Carl Wuyts, System Architect Networking

technicolor



In this Presentation

- IPv6 readiness of the Technicolor DSL / Ethernet Gateway
- Experience in development
- Experience in deployment
- User “readiness”

Is Technicolor Gateway IPv6 ready ?



IPv6 Ready Logo - Phase II core protocols certified with R10.1 firmware!!

[https://www.ipv6ready.org/db/index.php/public/search/?](https://www.ipv6ready.org/db/index.php/public/search/?l=&c=&ds=&de=&pc=&ap=&oem=&etc=&fw=&vn=technicolor&do=1&o=)

[l=&c=&ds=&de=&pc=&ap=&oem=&etc=&fw=&vn=technicolor&do=1&o=](https://www.ipv6ready.org/db/index.php/public/search/?l=&c=&ds=&de=&pc=&ap=&oem=&etc=&fw=&vn=technicolor&do=1&o=)



IPv6 CPE Features (1)

- Dual stack
- PPPoE(oA) / IPoE
- Tunneling/transition:
 - 6rd / 6to4 / 6in4
 - Dslite (next release, Q1 2012, today available in beta firmware for lab, interop (already done for some vendor) or other testing)
 - L2TP (next release, Q1 2012)

IPv6 CPE Features (2)

- DHCPv6
 - Stateful/stateless client
 - Stateless server
 - Relay (next release, Q1 2012)

- Stateful connection tracking and firewall

- DNS
 - DNSv4/v6 proxy
 - RFC6106

IPv6 CPE Features (3)

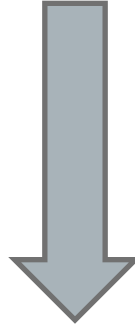
■ Management

- Telnet / FTP
- CGI (added IPv6 info)
- TR-069
 - IGD
 - Proprietary IPv6 extensions to IGD to enable/disable IPv6
 - Full configuration change through sts files
 - Device2 support in later phase - work in progress

■ ICMPv6

■ ...

Make or buy ?



Extend our own IP stack with IPv6 support

Owned by Technicolor

Flexible adding of features

Nothing to publish/reveal, no GPL

Fully configurable

Low Memory footprint

Easier to maintain (less dependency)

Performance

Built-up of experience during development

Flexible to meet customer's specific requirements

Deployment

- “We come to you”: No longer slideware but the real deal. Available for live demo, lab usage on any DSL flavour or ethernet.
Just contact us and we’ll come to you.
- Everything customizable → “zero-config”, seamless transition
- Upgrade from non-IPv6 firmware to IPv6 firmware without loss of data
- Today: Mainly Lab-testing and pilots.
First roll-outs: Q1 2012
- Increased attention on tenders, has become a must-have feature on CPE

User “readiness” (1)

- Subject for this panel:
 - “CPE and user readiness for IPv6”
- Is the CPE ready? Yes!!
- Is the User ready?
 - Our target audience: mainly residential user
 - Should (s)he be “ready”?
 - Does (s)he needs to know what IPv6 is?
 - Does (s)he needs to know what an IP address is anyway?

==> User just needs a working CPE, no matter IPv4 and/or IPv6. (s)He should not notice!! BUT ...

User “readiness” (2)

BUT ...

IF you can explain / convince your customer that e.g. “your Smart Phone needs an IPv6-capable CPE for prime services”

THEN you’re into a clear area to convince your customer that (s)he needs it.

AND

IF you introduce some CG/LS NAT-solution (again, start from the point that the end-user doesn’t know about NAT)

THEN you might have to split up your contracts (prime vs basic (or “Lite”)) as you might have “degraded” services (depending on the end-user of course).

technicolor



Thank You for Your Attention !