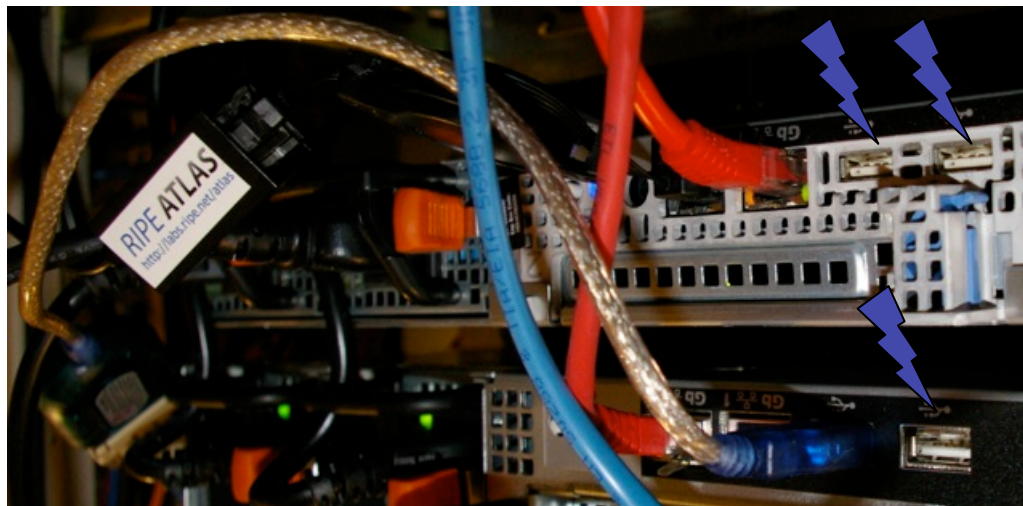
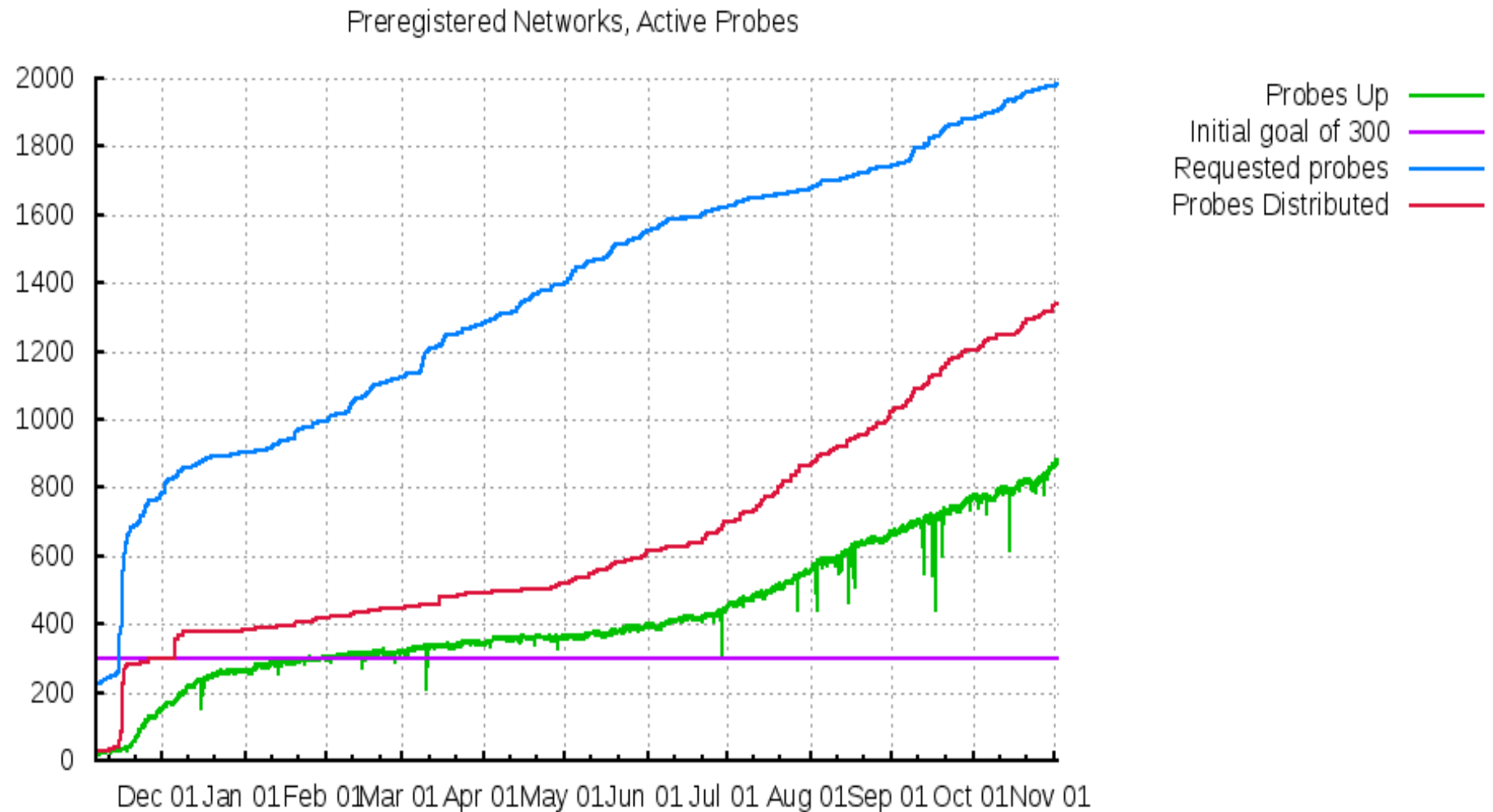

A RIPE Atlas Probe for Every Member

Daniel Karrenberg

Reminder



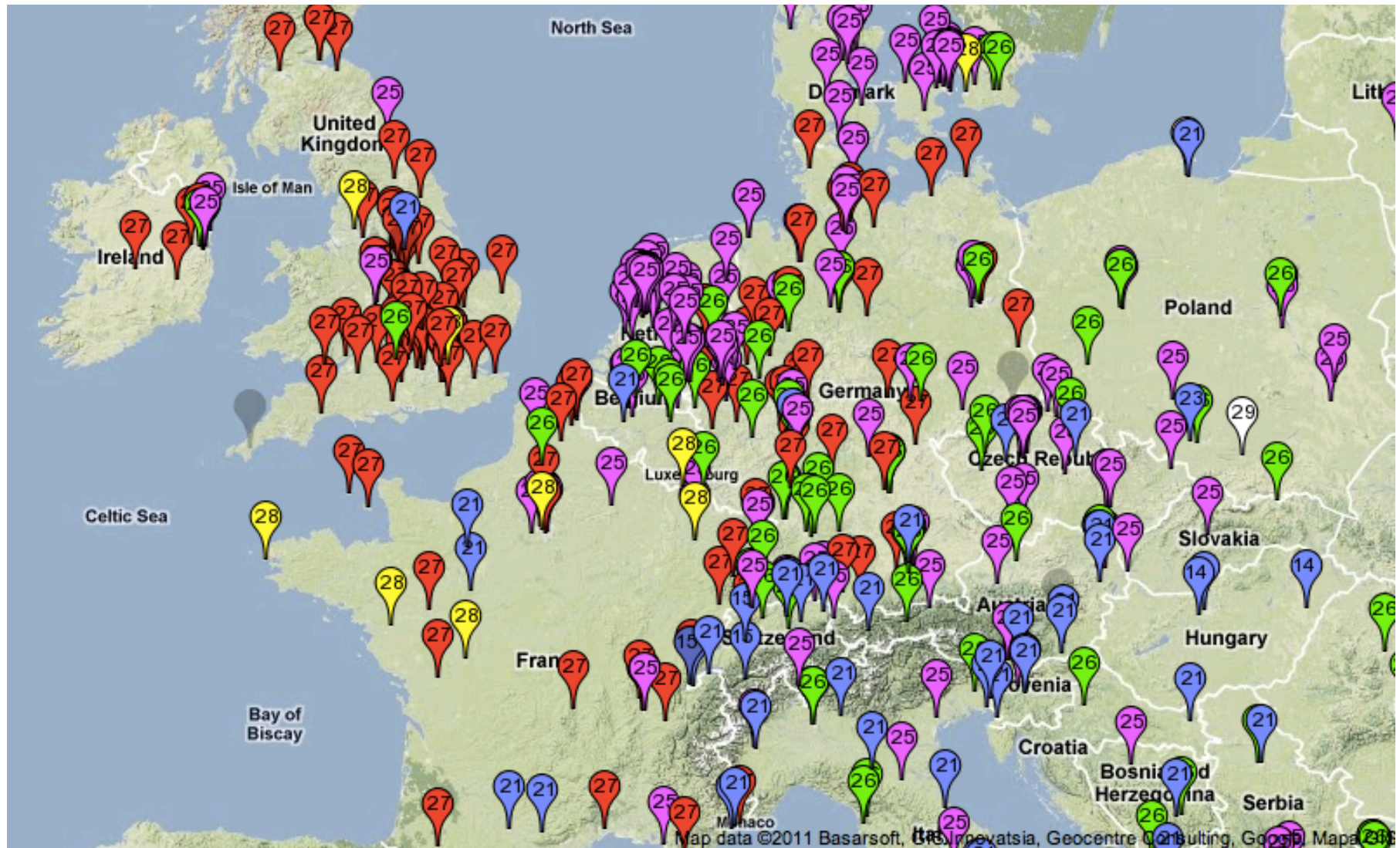
Probes Deployed Today



'Closest' DNS Root Name Server



Anycast Instance for k.root-servers.net



Goals & Current Budget

- probes up
 - Q4/11: 1K, Q2/12: 2K, Q4/12: 4K
- User Defined Measurements
 - “now”: beta with O(10) testers, ping/traceroute, DNS, raw data access / basic ping visualisation
 - Q4/11 general release of v1.0
 - Q2/12 more measurements, visualisations via RIPEstat
- Map Products:
 - 1 new / 1-2 months

Goals & Current Budget

- build communities
 - probe hosts
 - sponsors
 - academic liaison

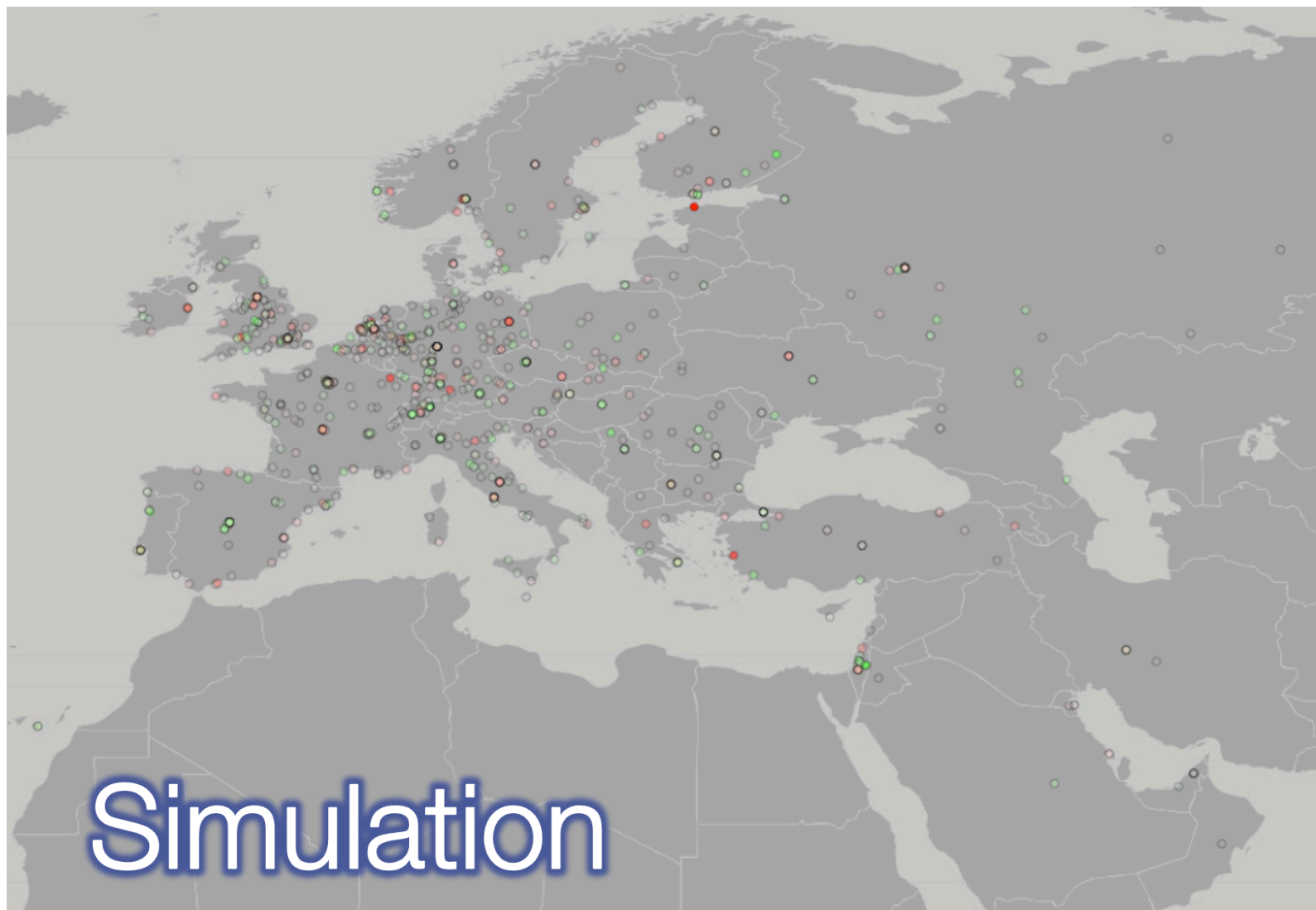
We have proven that we can can deploy the
infrastrucutre.

There are others in this space.

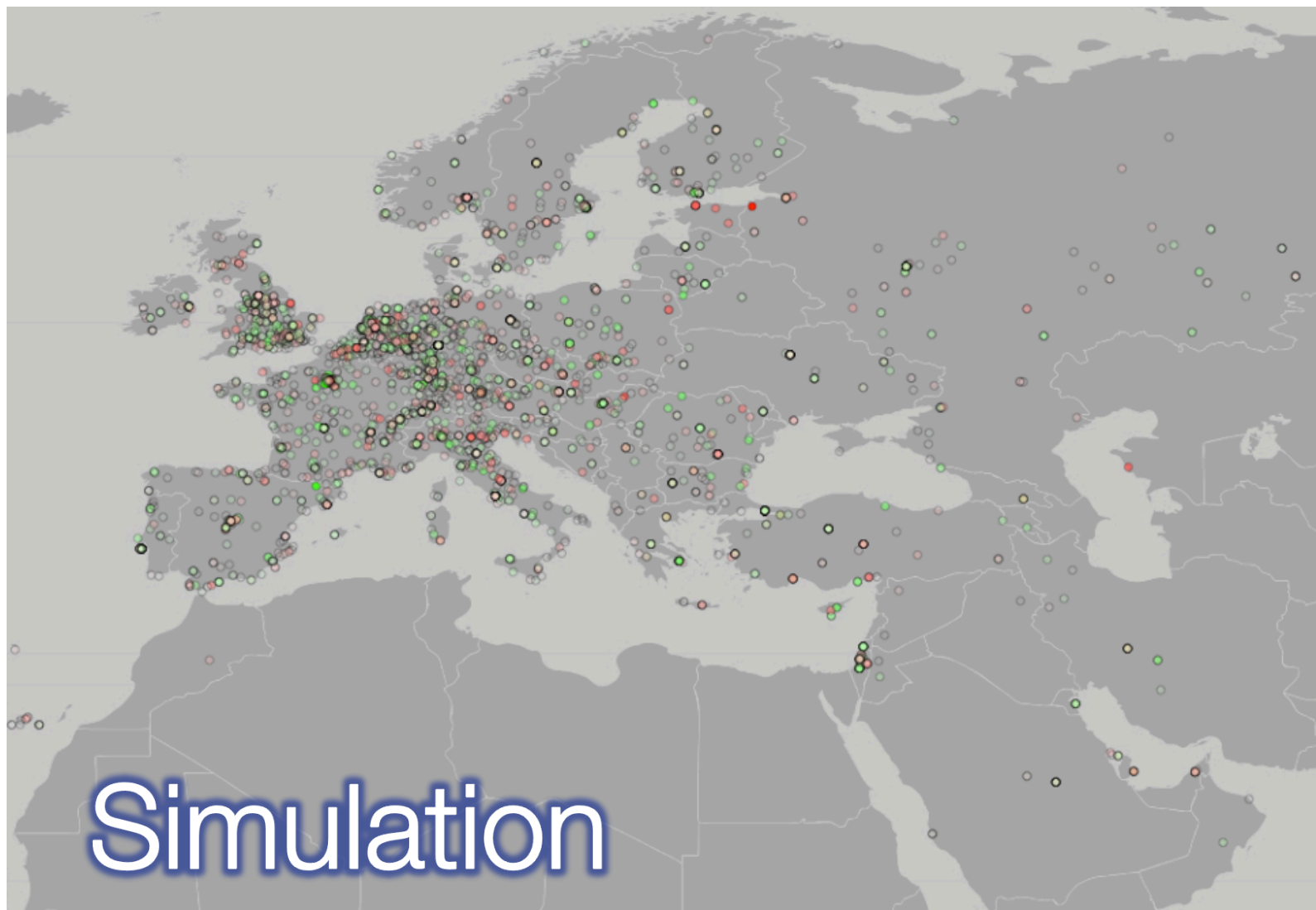
The real benefits come with size

WE SHOULD BE MORE AMBITIOUS

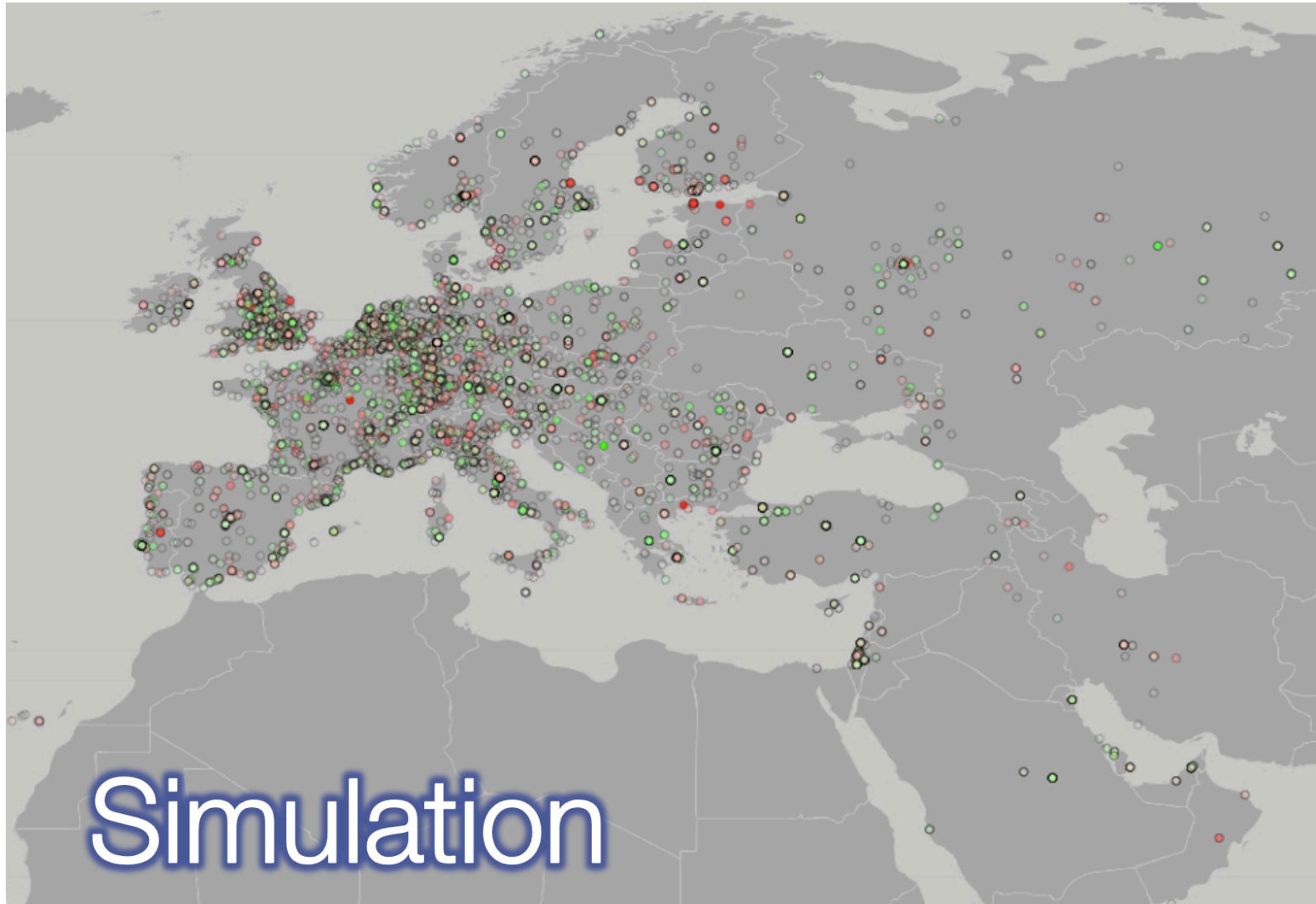
Intuition: 1000 Probes



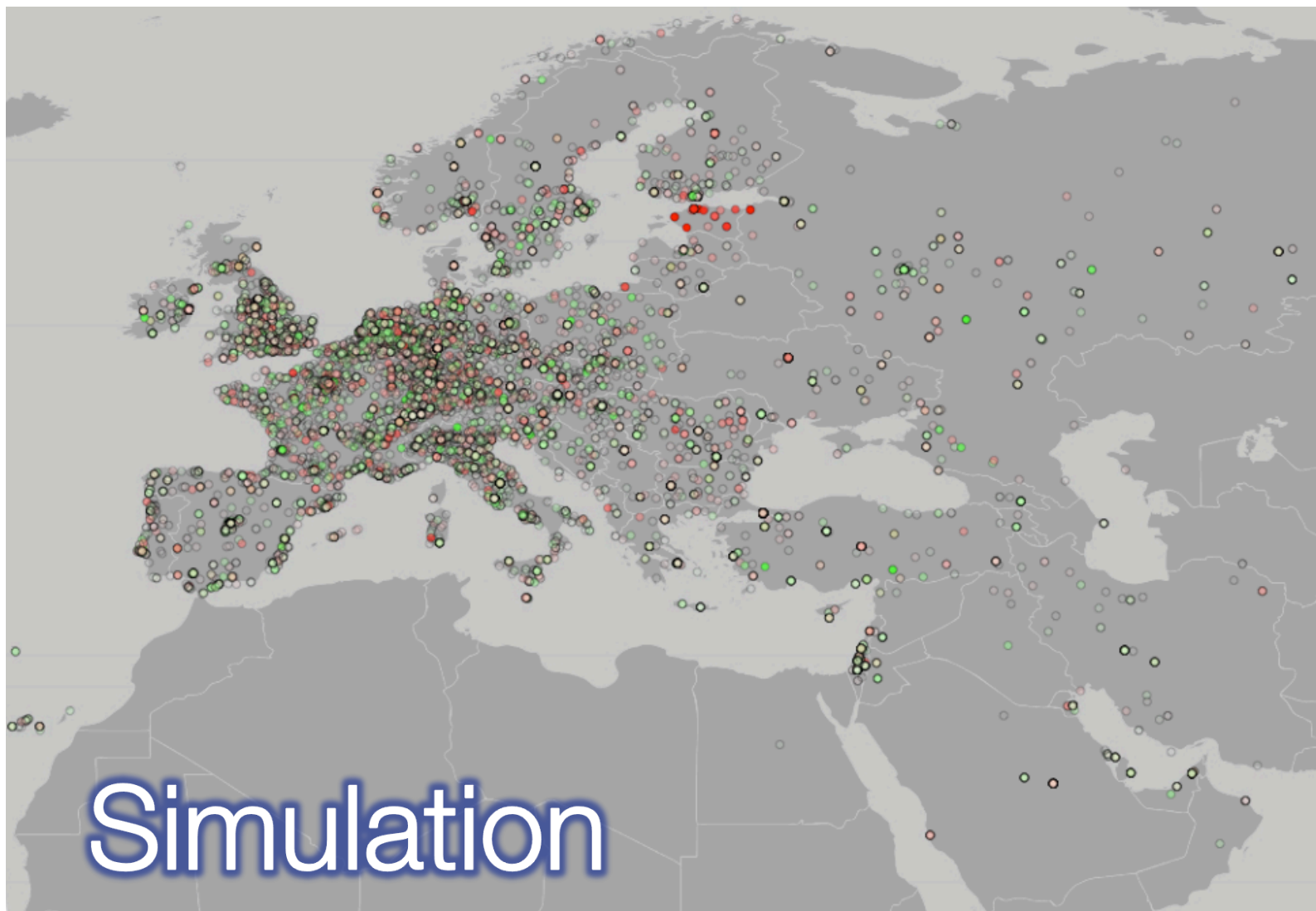
Intuition: 5000 Probes



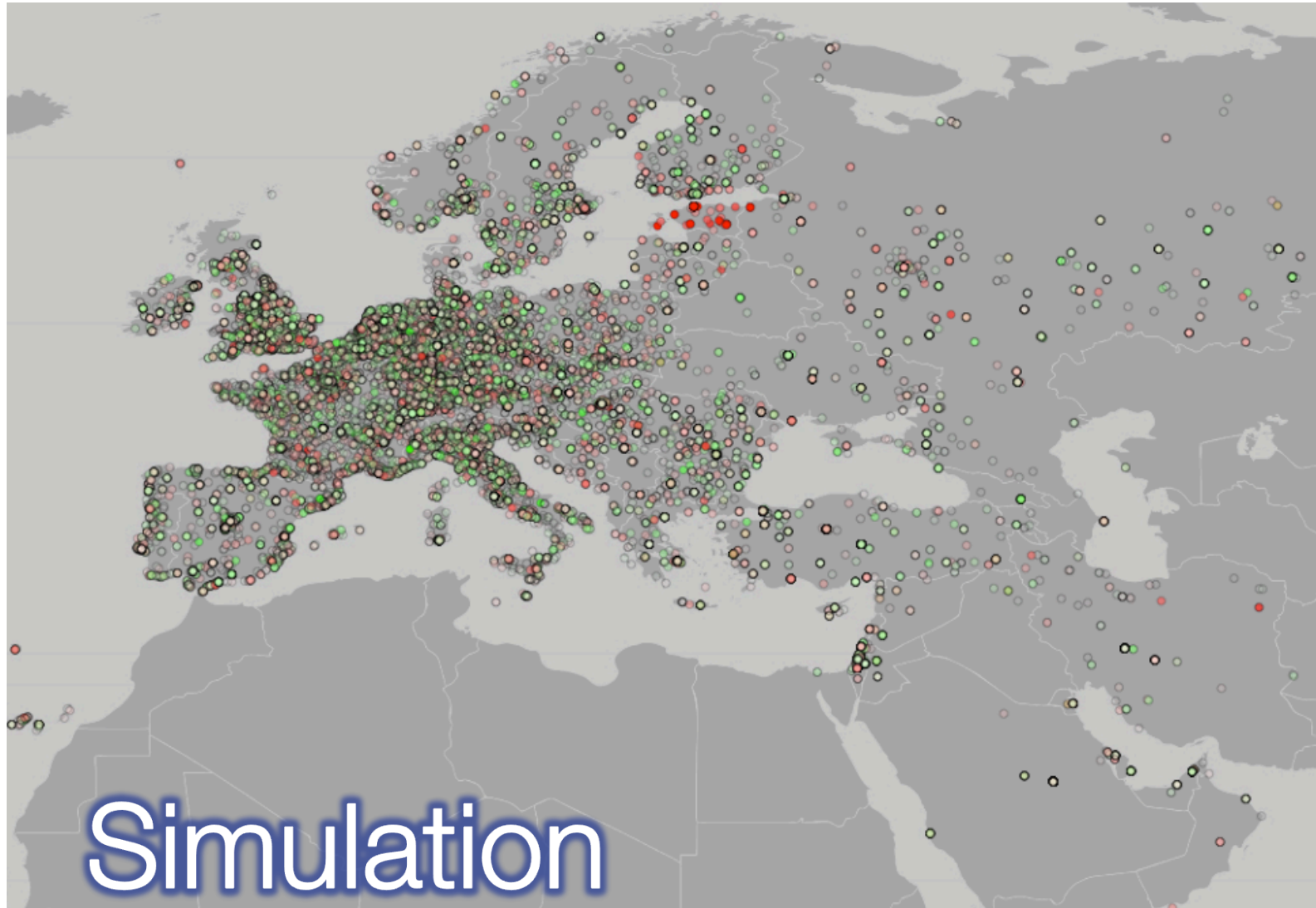
Intuition: 10k Probes



Intuition: 20k Probes

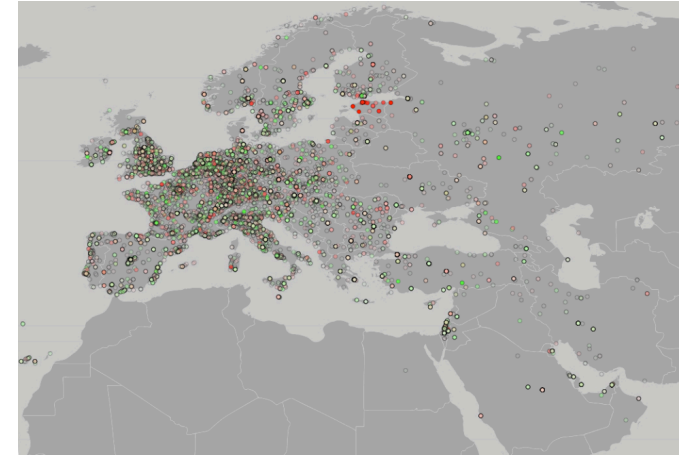


Intuition: 50k Probes



Where to Aim

- 20k probes is a threshold
 - Buying power for hardware
 - 15+k ASNs active in RIPE region
 - 7+k RIPE NCC members
 - Significant step in ‘resolution’ of the Atlas ‘machine’:



Gain

- 20k resolution required for
 - Reliable situational awareness to the small AS level, e.g. the required “resolution” for that
 - Real ‘perspectives’ for DNS and SSL
 - ...
- Noticeable Activity above the Mean Sea Level
- Goodwill with Membership / Governments
- Avoid to be surpassed by others

Additional Cost to Be More Ambitious

(Assuming O(20k) probes by 2013)

- Incrementals: $\sim 50\text{€} / \text{probe} = 1\text{M€} @ 20\text{k}$
- Fixed: $\sim 700\text{k€}$
- FTE: ~ 12 in 1st year
- Recurring: $\sim 800\text{k€} / \text{year}$

Way Forward

- RIPE NCC Executive Board decides on budget.
- So if you agree we should be more ambitious with RIPE Atlas, then **make yourself heard.**
- And if you do not agree, do the same.
- More detailed story on RIPE Labs.

Questions?

